



INTEGRATION COURSES

Welcome to the Czech Republic



A NEW OBLIGATION FOR SELECTED GROUPS OF THIRD-COUNTRY NATIONALS SINCE 1 JANUARY 2021: AN ADAPTATION-INTEGRATION COURSE

The adaptation-integration course will help you with quick and easy orientation in Czech society, and provide you with basic information about your rights and obligations.

WHO IS OBLIGED TO TAKE THE COURSE?

The adaptation-integration course is obligatory for selected groups of foreigners having a long-term residence permit issued after January 1, 2021 and foreigners who have been issued a permanent residence permit without the condition of previous stay in the Czech Republic after the above mentioned date. You can find a full list of groups of foreigners that are obliged to sign up for the course, including a list of exceptions defined by law, on the **website of the Ministry of the Interior**:



WHEN DO I NEED TO TAKE THE COURSE?

If you are obliged to take the adaptation-integration course, you need to do so within a year from the date when your resident permit came into effect (which usually happens when you collect your residence permit for a third-country national with biometric data - ePKP).

WHERE CAN I SIGN UP?

You can sign up and pay for the course only at the **FRS portal**: www.frs.gov.cz



WHERE DOES THE COURSE TAKE PLACE?

You can take the course directly at the premises of a **Centre for Support of Integration of Foreigners** (so-called public course), or your employer can organize this course for you in collaboration with an integration centre (so-called non-public course). There are 18 of these integration centres in the Czech Republic and you can find more about them here: www.integracnicentra.cz



HOW LONG DOES IT TAKE?

4 hours

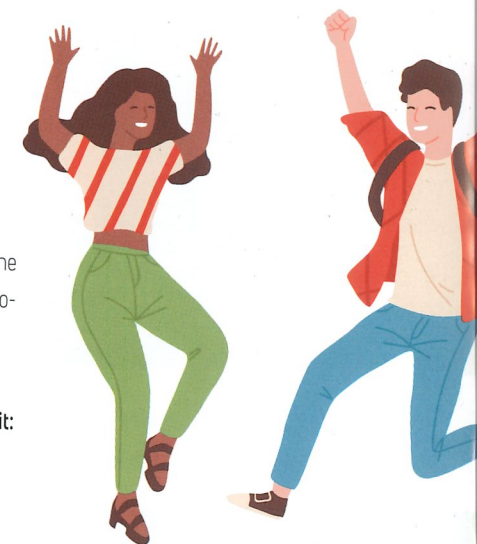
HOW MUCH IS IT?

The fee for a public course is CZK 1,500.

WHAT IS THE LANGUAGE OF THE COURSE?

The course is taught in Czech and it is interpreted into one of these nine languages: English, Russian, Ukrainian, Spanish, French, Serbian, Mongolian, Arabic and Vietnamese.

For detailed information about the adaptation-integration course visit: www.vitejtevcr.cz



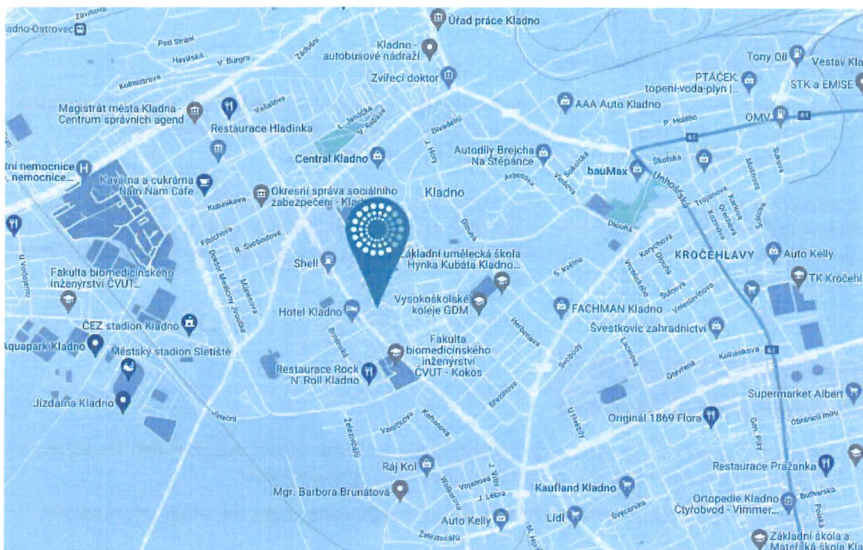
ATTENTION!!!

You can fulfil your obligation only by attending the official course administered by a Centre for Support of Integration of Foreigners listed at www.integracnicentra.cz. Please look for information and register only at the websites mentioned above.



MINISTERSTVO VNITRA
ČESKÉ REPUBLIKY





Opening hours

Monday — 12:00 – 18:00

Tuesday closed for public

Wednesday — 12:00 – 18:00

Thursday 08:00 – 12:00

Friday 08:00 – 12:00



www.integracnicentra.cz/kladno

**Centrum na podporu
integrace cizinců
Kladno**

Cyrila Boudy 1444
272 01 Kladno-Kročeňlavy
+420 325 630 546
ickladno@suz.cz



CENTRE FOR SUPPORT OF INTEGRATION OF FOREIGNERS IN Kladno OFFERS YOU

 **Professional Social Counselling**

 **Legal Counselling**

 **Czech Language Courses**

 **Socio-cultural Courses**

 **Educational events**

 **Adaptation and Integration Courses**

Services are intended for:

- Foreigners residing legally in the Czech Republic for a long period of time on the basis of the Act on the Residence of Foreigners
- People who have been granted international protection
- People who do not belong to above mentioned groups but can prove they have similar integration needs

Adaptation and Integration course (AIK) is intended for foreigners who have been issued long term residency permit for Czech territory and those who have been issued permanent residency permit for Czech territory without the condition of previous stay in Czech Republic. AIK is paid course and foreigner needs to complete it within one year from the date they collected the residency card.

If the other services of the Centre are **FREE OF CHARGE**. If there is demand, courses and advisory services can be provided anywhere in Central Bohemia region.

Professional Social Counselling

There is a registered professional social counselling service in the scope of work of Centre under act No. 108/2006 Coll. This service is provided by social workers of the Centre. More detailed information can be found at: www.integracnicentra.cz, in information pamphlets of the service and in social services registry.

Advice and assistance can be provided in following areas:

- Residence-related requirements
- Social assistance and social benefits
- Health care and health insurance
- Accommodation, labour market, education
- Life events – child birth, marriage, death of a loved one
- Completion of various forms, if necessary we will provide assistance at state administration offices

Legal Counselling

At set hours there is a lawyer present in Centre who you can consult with:

- Residency ad visa issues
- Labour law issues
- Foreclosure of property, debt repayment

The hours during which legal counselling is provided can be found in our Center or at www.integracnicentra.cz. We recommend that you make an appointment in advance personally or by phone, so you avoid possible queueing.

Czech language courses

We organize in-person and online Czech language courses.

Elementary courses

- It is designed for clients with minimal knowledge of Czech language
- One time visit is possible

It will teach you to communicate in daily life situations such as medical appointment, at the state office, in shop etc.

Intensive courses

- It is intended for clients with basic to advanced knowledge of Czech language
- You will be enrolled to the relevant course by the teacher based on the entry test
- Individual lessons are subsequential and it is necessary to attend them regularly
- Capacity of these courses is limited and it is necessary to register and to be enrolled

The communication will be easier for you in more complex situations, for example at work interview. It can also help you prepare for the Czech language exams.

Sociocultural courses

- These courses will provide you with general information about the life in ČR, rights and obligations
- You will learn how to communicate with state offices and employers more effectively
- You will get information necessary for the Czech citizenship exam

Courses cover large variety of topics, for example: Education system in Czech republic, registration of children to Czech schools, recognition of foreign education, family reunification, permanent residency, citizenship, healthcare system and health insurance in Czech Republic, employment and change of employer, housing, tax and tax return, etc.

Educational events

We organize and provide lectures and training sessions. These events are intended for variety of participants, from children and adolescents to wide public or professionals.

We cooperate with school, low-threshold facilities for children and youth and other organizations.

Adaptation and Integration Courses (AIK)

Main topics discussed at the course are the general information needed for situations you can encounter in your daily life. For example:

Main topics discussed at the course are the general information needed for situations you can encounter in your daily life. For example:

- Residence related issues
- Employment
- Education
- Health system
- Social Security
- Housing
- Etc.

Each course is interpreted to one of the following languages.

- English
- Arabic
- French
- Mongolian
- Russian
- Serbian
- Spanish
- Ukrainian
- Vietnamese

